



149, AUCHMEAD
ROAD, GREENOCK, PA16 0JT



 neillclerk
ESTATE AGENTS



Description

This is a rare opportunity to purchase a well presented spacious three bedroom UPPER QUARTER VILLA which has been customised and internally redesigned by the current owner. Particular features include the installation of glazed French doors which open onto individual Juliette balconies from both the kitchen and 2nd bedroom, plus the creation of a larger bathroom with four piece suite. In recent years the exterior of the building has been reroofed and re-rendered. This property offers an excellent family home.

There is a private section of lawned rear garden with cellar recess. The front garden offers an enclosed pebbled plot with rockery. Specification includes: double glazing, gas central heating and downlighters. The interior benefits from recently fitted carpets and a stylish interior. There is a hatch giving loft access from the hallway. Lies convenient for local shops, amenities and schooling.

Impressive accommodation comprises: Entrance Vestibule/Stair is reached by UPVC double glazed door. The airy staircase features a rear facing window and wrought iron banister which leads to the Hallway with side window. There is a bright front facing Lounge with two light window which enjoys views beyond surrounding properties towards the countryside in the distance. The quality refitted Kitchen benefits from oak style units, black/grey marble style work surfaces and splashback tiling. Appliances include: "Rangemaster" electric range cooker with induction hob, and American style fridge/freezer.

There are three double sized Bedrooms which are ideal for families. The Bathroom is a generous sized room with four piece suite comprising: vanity wash hand basin set within white high gloss unit, bath, double sized shower cubicle and wc. Additional features include: chrome style heated towel rail and partial wall tiling.

Early viewing is highly recommended. EPC = C

Measurements

Entrance Stair

Hallway

Lounge
3.68m x 4.19m (12'1 x 13'9)

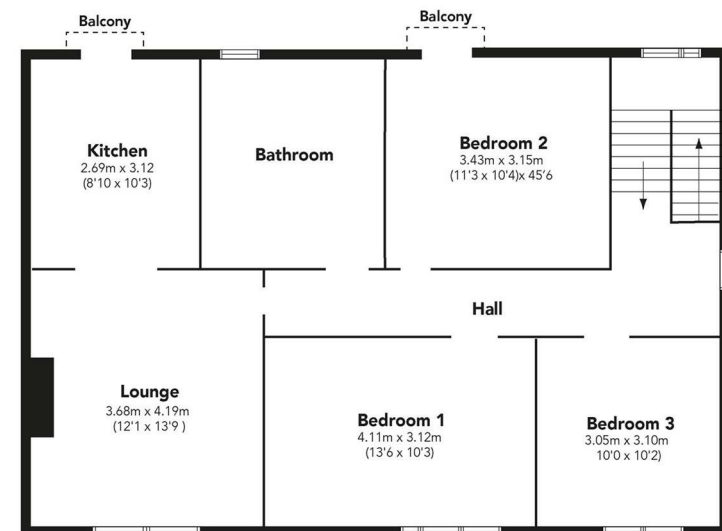
Kitchen
2.69m x 3.12m (8'10 x 10'3)

Bedroom 1
4.11m x 3.12m (13'6 x 10'3)

Bedroom 2
3.43m x 3.15m (11'3 x 10'4)

Bedroom 3
3.05m x 3.10m (10'0 x 10'2)

Bathroom



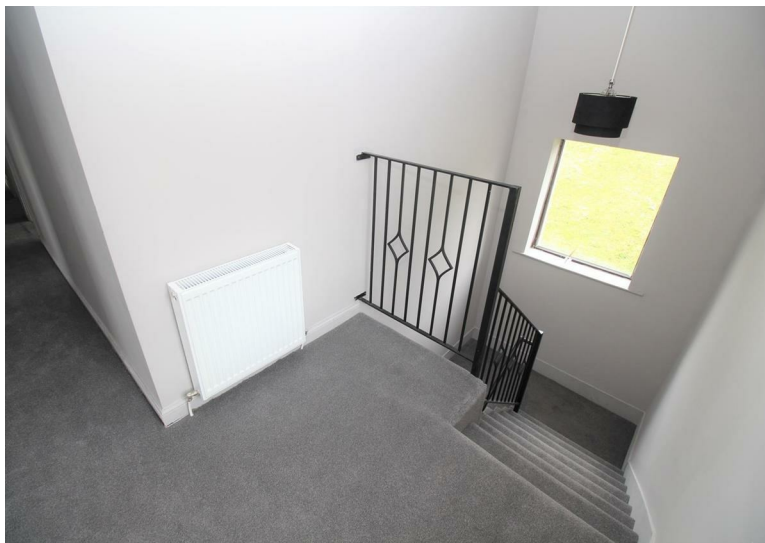
Floorplans are indicative only - not to scale
Produced by Plushplans











Agents Notes:

These sales particulars are set out as a general outline only, issued in good faith, but do not constitute representations of fact and do not form part of any offer or contract. Any services, equipment, appliances, fittings or central heating systems have not been tested and no warranty is given or implied that these are in working order. All measurements are approximate and for guidance only.

Neither Neill Clerk Estate Agents nor any of its employees or agents has any authority to make or give any representation or warranty whatever in relation to this property.

The
next
step..



To view call 01475 888400. Speak to us 7 days a week until 11pm every day to book your viewing appointment.

House to sell or rent?

Call 01475 888400 to book your free market appraisal.

Require a solicitor?

Ask us to supply a free legal quotation from Neill Clerk & Murray, Solicitors.
www.neillclerkmurray.co.uk

Stay fully up-to-date by following Neill Clerk on:



**60 West Blackhall Street
Greenock
Renfrewshire
PA15 1UY**

t: 01475 888400

e: sales@neillclerk.co.uk

w: www.neillclerk.co.uk



Find all our properties at: [rightmove](https://www.rightmove.co.uk) [Zoopla](https://www.zoopla.co.uk) [onTheMarket.com](https://www.onthemarket.com) [s1homes.com](https://www.s1homes.com)