



30, DEVON ROAD, GREENOCK, PA16 0LE



 neillclerk  
ESTATE AGENTS





## **Description**

**\*\*CLOSING DATE ON FRIDAY 2ND JUNE AT 11AM\*\***

Occupying a popular residential location this immaculately presented three bedroom MID TERRACED VILLA has been extensively upgraded in recent years and offers bright stylish family living. There is a monoblock parking area providing essential off street parking for two cars. The rear garden is enclosed by fencing and features a lawned plot

Specification includes: double glazing and gas central heating. Conveniently positioned for transport facilities, amenities and local schooling. There are rear views over Greenock towards the countryside in the distance.

The impressive family apartments comprise: Entrance Vestibule by UPVC double glazed door with side panel and inbuilt cupboard is on open plan with the welcoming hallway which features laminate flooring. There is a bright front facing Lounge with herringbone flooring. The dining sized Kitchen overlooks the rear garden and benefits from a quality range of white high gloss units, white work surfaces and splashback tiling. Appliances include: stainless steel chimney extractor hood, gas hob and electric oven. There is ample space for a dining table and chairs. The Rear Vestibule provides useful storage within a recess and has a UPVC door leading to the garden.

The quality Bathroom is located downstairs with a rear window and features a pedestal wash hand basin, wc and shower bath with chrome style shower. Additional features include: wall and floor tiling, tiled floor, chrome style heated towel rail and decorative panelled ceiling with downlighters.

Stairs lead to the Upper Landing with front facing window and inbuilt cupboard. There are three double sized Bedrooms which are perfect for families.

Immediate viewing is advised for this three bedroom family home. EPC = C

## **Measurements**

Entrance Vestibule

Hallway

Lounge

4.27m x 3.94m (14'0 x 12'11)

Dining Kitchen

2.82m x 3.23m (9'3 x 10'7)

Rear Vestibule

Downstairs Bathroom

Bedroom 1

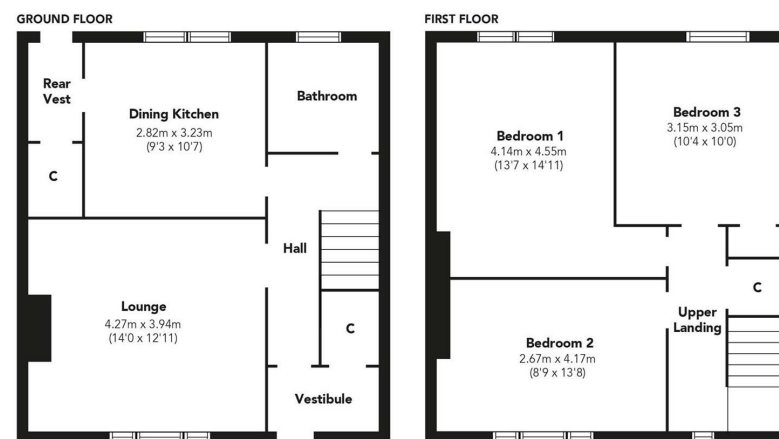
4.14m x 4.55m (13'7 x 14'11)

Bedroom 2

2.67m x 4.17m (8'9 x 13'8)

Bedroom 3

3.15m x 3.05m (10'4 x 10'0)



Floorplans are indicative only - not to scale  
Produced by Plushplans 



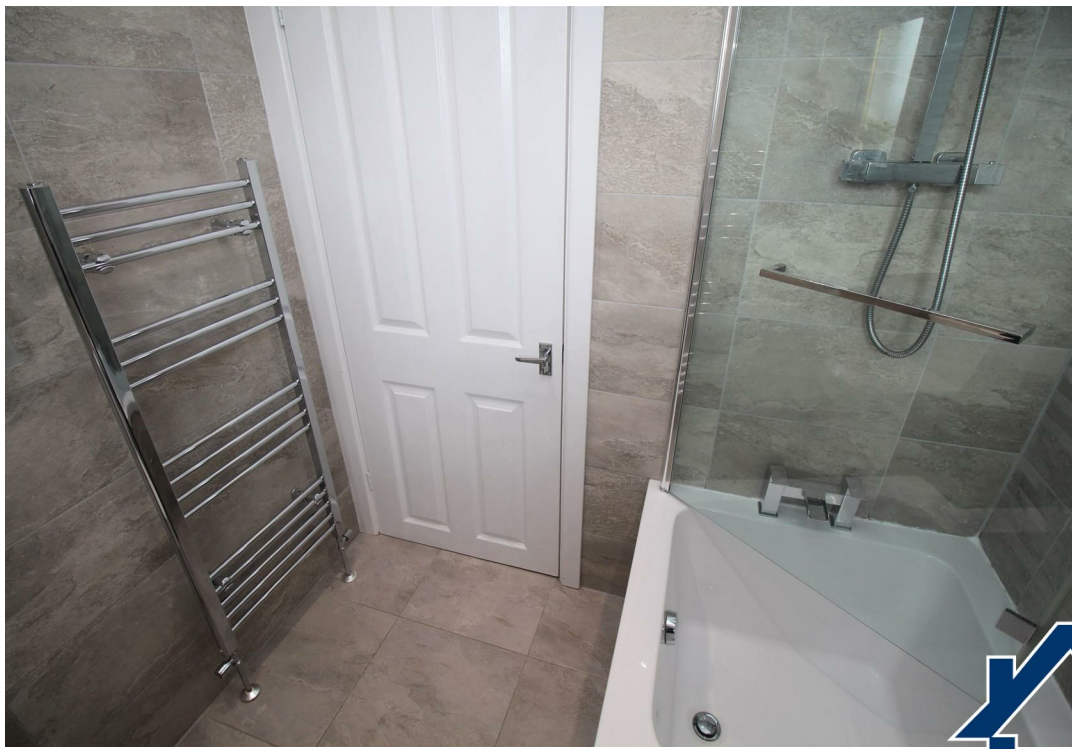




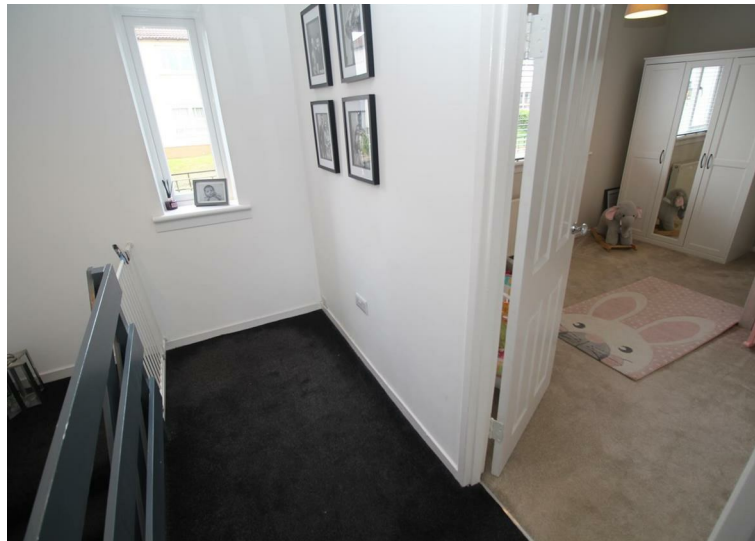












The  
next  
step..



To view call 01475 888400. Speak to us 7 days a week until 11pm every day to book your viewing appointment.

**House to sell or rent?**

Call 01475 888400 to book your free market appraisal.

**Require a solicitor?**

Ask us to supply a free legal quotation from Neill Clerk & Murray, Solicitors.  
[www.neillclerkmurray.co.uk](http://www.neillclerkmurray.co.uk)

Stay fully up-to-date by following Neill Clerk on:



**60 West Blackhall Street  
Greenock  
Renfrewshire  
PA15 1UY**

**t: 01475 888400**

**e: [sales@neillclerk.co.uk](mailto:sales@neillclerk.co.uk)**

**w: [www.neillclerk.co.uk](http://www.neillclerk.co.uk)**



**Agents Notes:**

These sales particulars are set out as a general outline only, issued in good faith, but do not constitute representations of fact and do not form part of any offer or contract. Any services, equipment, appliances, fittings or central heating systems have not been tested and no warranty is given or implied that these are in working order. All measurements are approximate and for guidance only.

Neither Neill Clerk Estate Agents nor any of its employees or agents has any authority to make or give any representation or warranty whatever in relation to this property.

Find all our properties at: [rightmove](https://www.rightmove.co.uk) [Zoopla](https://www.zoopla.co.uk) [onTheMarket.com](https://www.onthemarket.com) [s1homes.com](https://www.s1homes.com)