



1/1, 5, JAMES WATT
WAY, GREENOCK, PA15 2AD





Description

This well presented two bedroom FIRST FLOOR FLAT offers stylish living within a highly desirable waterfront development. Access to the flat is available by lift or stair access. There are impressive rear views towards the James Watt Dock and across the River Clyde.

There is allocated parking and additional communal visitor spaces are available. Specification includes: double glazing, gas central heating and security door entry system. Lies close to Cartsdyke railway station with a frequent service to Glasgow and the development allows direct access to the A8 ideal for commuters to Glasgow and further afield.

Highly impressive apartments comprise: welcoming "L" shaped Entrance Hallway with hardwood flooring and two inbuilt cupboards. There is an airy spacious Lounge/ Dining Room ideal for entertaining on open plan with the quality fitted kitchen. A glazed door leads to a rear facing Juliette balcony rails with view to James Watt Dock which continue to the River Clyde with the hills beyond.

The quality fitted Kitchen offers a range of beech style units, marble effect work surface areas and splashback tiling. Appliances include: stainless steel chimney extractor hood, gas hob, electric oven, integrated fridge, freezer, washing machine and dishwasher. There is ample space for table and chairs within this apartment.

There is a bright side facing double sized Master Bedroom with beech style fitted wardrobes. The quality Ensuite Shower Room benefits from a front facing arched window, plus three piece suite comprising: semi pedestal wash hand basin, wc and double sized shower cubicle with "Triton" shower plus heated towel rail. There is a 2nd double sized Bedroom with fitted beech style wardrobe.

The quality Bathroom with arched front window has a three piece suite comprising: semi pedestal wash hand basin, wc and bath with "Triton" shower plus heated towel rail.

Immediate viewing is recommended for this waterfront home. EPC = B.

Measurements

Hallway

Lounge / Dining Room
3.86m x 6.35m (12'8 x 20'10)

Kitchen
3.86mx 2.49m (12'8x 8'2)

Master Bedroom
2.87m x 3.96m (9'5 x 13'0)

Ensuite Shower Room

Bedroom 2
3.00m x 3.07m (9'10 x 10'1)

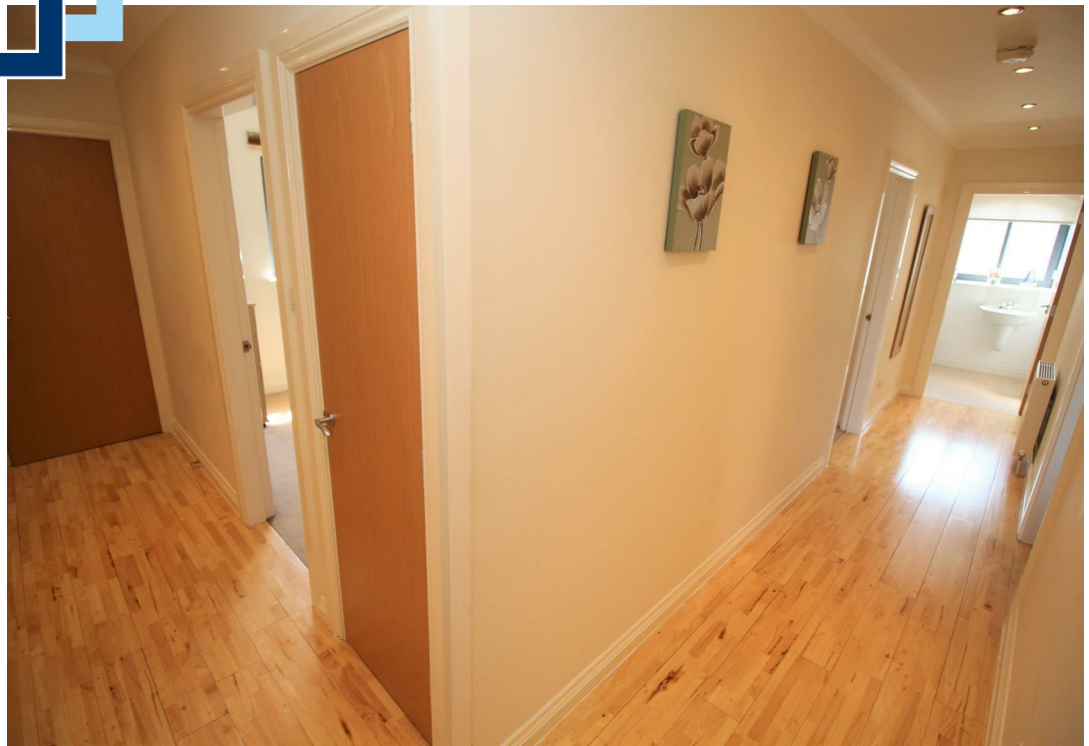
Bathroom













The
next
step..



To view call 01475 888400. Speak to us 7 days a week until 11pm every day to book your viewing appointment.

House to sell or rent?

Call 01475 888400 to book your free market appraisal.

Require a solicitor?

Ask us to supply a free legal quotation from Neill Clerk & Murray, Solicitors.
www.neillclerkmurray.co.uk

Stay fully up-to-date by following Neill Clerk on:



**60 West Blackhall Street
Greenock
Renfrewshire
PA15 1UY**

t: 01475 888400

e: sales@neillclerk.co.uk

w: www.neillclerk.co.uk



Agents Notes:

These sales particulars are set out as a general outline only, issued in good faith, but do not constitute representations of fact and do not form part of any offer or contract. Any services, equipment, appliances, fittings or central heating systems have not been tested and no warranty is given or implied that these are in working order. All measurements are approximate and for guidance only.

Neither Neill Clerk Estate Agents nor any of its employees or agents has any authority to make or give any representation or warranty whatever in relation to this property.

Find all our properties at: [rightmove](https://www.rightmove.co.uk) [Zoopla](https://www.zoopla.co.uk) [onTheMarket.com](https://www.onthemarket.com) [s1homes.com](https://www.s1homes.com)